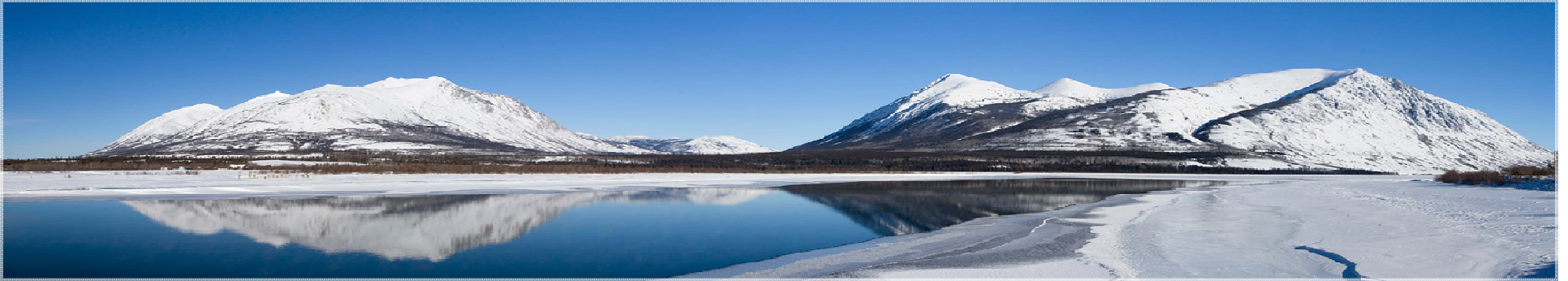


SUPERIOR • CONSULTING

...Providing Superior Results



OUR • VISION

Superior Consulting is dedicated to working closely with the client to achieve an optimal solution. Maintaining the highest level of professionalism, integrity, efficiency and safety in our relationships with clients.

OUR•TEAM

Experience in civil design and offshore oil and gas projects.

Knowledge of project management and cost estimating procedures.

Supported improvement initiatives required by the Integrity Management Program for the SeaRose FPSO.



Kayla Parsons



Glenn Finlay

Construction knowledge in the earthworks, highway, concrete, and heavy civil fields.

Practical experience gained from exposure to a variety of work environments.

Familiar with Project Management and Cost Estimation.

OUR•TEAM

Experience in Marine Structural Engineering, Environmental Site Assessments and Remediation.

Enjoy problem solving and finding creative solutions to challenges.

Interested in incorporating environmental best practices into future work.



Karl Hartmann



Jarrod Evans

Experience working with companies in the municipal, heavy civil, and construction industry.

Knowledgeable in technical writing, design of municipal systems, and cost estimates.

Interpersonal skills required to complete work within in a professional manner.

EXPERIENCE • WITH

Employers

SNC Lavalin

Newfoundland Power

Husky Energy

Stantec

Nalcor

CBCL Ltd.

Tiller Engineering

HJ O'Connell

AMEC Earth & Environmental

Pennecon Heavy Civil Ltd

Transportation & Works

Department of Municipal Affairs

Software

SAP

EaglePoint

S Steel

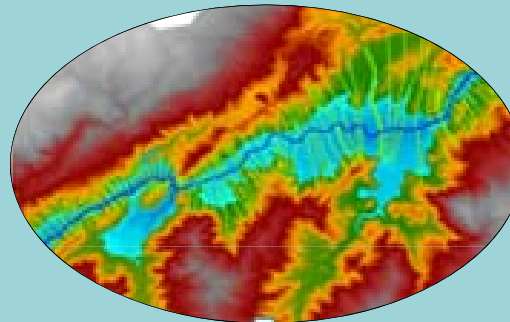
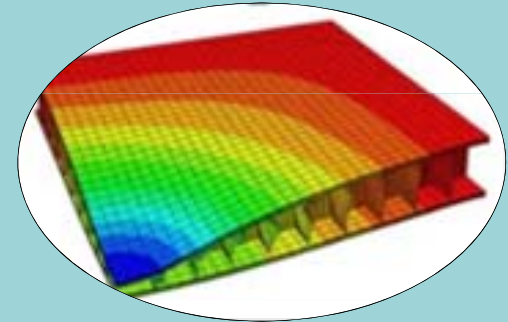
HEC-RAS/HMS

Microsoft Office

S Frame

ABAQUS

AutoCAD



SUPERIOR • CONSULTING

...Providing Superior Results



Contact • Information

Memorial University of Newfoundland and Labrador
St. John's, NL, A1B 3X5
superiorconsulting@gmail.com